

LUXURY VINYL GENERAL INSTALLATION INSTRUCTIONS FOR LOCKING FLOORING

ACCLIMATION

Acclimation is required prior to the installation of Luxury Vinyl Flooring (LVF). Store the UNOPENED BOXES in the room where the floor is to be installed for at least 48 hours prior to installation. Always store the boxes on a flat and level surface; never store the boxes on their sides. Heating and Air conditioning should be operational and set between 65°F - 85°F (18.3°C - 29.4 °C) for the acclimation and installation period.

RECOMMENDED TOOLS AND MATERIALS

- Safety glasses
- Measuring tape
- Square
- Utility knife
- Straight edge
- Spacers
- Chalk line
- Embossing leveler/floor patch (if necessary)
- Beaulieu Moisture Barrier Acoustical Underlayment -Underlayment is optional-Underlayment that is used should be no thicker than 0.06" (1.5mm) and the density should be a minimum of 25 lb per cubic foot (11.34 kg per 0.028 m³).
- **NOTE TO INSTALLER: When using knee pads, insure that the cap is a soft material. Never use hard cap knee pads as these may scratch the flooring.**

SUITABLE SUBSTRATES

Beaulieu®LVF can be installed over many floors. All carpeting and padding need to be removed. Make sure that the surface is clean, structurally sound and flat within 3/16" per 10 foot radius (4.7 mm per 3 m).

Supporting floors should be rigid as too much deflection can result in a failed installation. Maximum deflection should not exceed 3/64" (1.1 mm).

Beaulieu LVF should not be installed over existing plank floors, existing cushioned-backed vinyl flooring, asphalt-based floors, carpet, self-adhering plank or tile, laminate or other floating flooring or structurally-damaged concrete.

CONCRETE SUBSTRATES

All concrete (new and old) should be tested for moisture and pH levels. Concrete shall have a minimum compressive strength of 3500 psi. Moisture vapor emission rate should not exceed 8lb/1000 sq. ft. (3.63 kg/92.9 sq. m)/24 hours per ASTM F1869. Moisture may also be tested according to the test method ASTM F2170; when tested according to this method, the internal relative humidity should not exceed 90%, and pH level should be between 7 and 9. **IF MOISTURE IS PRESENT, DO NOT INSTALL FLOOR, corrective measures should be taken. Do not install when hydrostatic pressure or alkaline conditions are evident.** New concrete should be properly cured.

WOODEN SUBSTRATES

Wood floors should be a minimum of 3/4" (19 mm) thick, APA approved grade tongue and groove plywood or 23/32" (18.25 mm) OSB, with a smooth finish, free from spring and deflection. Make sure that the

surface is clean, dry, structurally sound and flat within 3/16" per 10 foot radius (4.7 mm per 3 m). All fastener indentations and joints should be level and smooth using appropriate patching compounds. Deflection should not exceed 3/64" (1.1 mm).

EXISTING RESILIENT FLOORS

When installing Beaulieu LVF over existing resilient flooring, ensure that the existing sheet good or tile product is in good condition, and that it was installed in the full spread method and is properly secured. Beaulieu LVF can be installed over one layer of non-cushioned sheet good flooring. It may be best to remove the present floor and prepare the structural floor for a fresh application of the Beaulieu LVF. Existing tile or sheet resilient floor should be stripped using a product that is an appropriate stripper for vinyl to remove wax or other contamination and rinsed with clear water and allowed to dry. Very smooth or high-gloss floors need to be lightly abraded to rough up the surface to allow proper adhesive bonding.

GYPSUM FLOORS

Beaulieu LVF can be installed as floating floor over flooring grade gypsum subfloors when properly installed over a subfloor that is structurally sound and flat within 3/16" per 10 foot radius (4.7mm per 3m).

MARBLE, QUARRY TILE, TERRAZZO, CERAMIC TILE

Properly cleanse substrate using a commercial degreasing/dewaxing solution. Grind or abrade any highly polished or irregular surfaces. Fill any low areas, chips and grout joints that may telegraph through the new flooring. Test for porosity and use the appropriate adhesive application method. Bond tests are required.

RADIANT-HEATED FLOORS

BeaulieuLVFcan be installed over embedded radiant-heated floors provided the operating temperature never exceeds 85°F (29.4°C). The radiant system should be in operation for three (3) weeks prior to installation of the flooring. For 48 hours prior to and during installation, the system should be kept at 65 °F (18.3°C). It should be noted that when using adhesive, flash off time may be decreased due to operation of the radiant heat flooring system. Once the installation is completed, the heat should be gradually increased by a maximum of 5°F (2.8°C) per day until the desired setting is reached.

JOB SITE CONDITIONS/SUBSTRATE PREPARATION

- Verify the boxes to make sure that they are of the correct product. Inspect all planks/tiles for visible defects and damage before and during installation. Do not install damaged planks/tiles. Beaulieu will not accept responsibility for claims on flooring installed with obvious defects.
- Room temperature should be no less than 65°F (18.3°C) for 48 hours before, during and after installation. Maximum temperature should not exceed 85°F (29.4 °C).
- Substrate should be free of dust, debris from paint, varnish, wax, oils, curing sealers, solvents and other foreign matter. Any adhesive residue from prior installations should be completely removed.
- Any looseness of the substrate should be secured.
- High spots should be levelled and low spots should be filled with a proper material to ensure substrate is flat within 3/16" per 10 foot radius (4.7 mm per 3 m).
- All construction seams, expansion joints, and holes should be filled level with the surrounding surface to eliminate telegraphing of such irregularities.
- When installing over an existing resilient flooring material, an embossing leveler may be required to prevent the existing material pattern from telegraphing through the new material.
- When installing, open several boxes at a time and mix planks/tiles from different boxes for best results and overall look.

- Beaulieu recommends the use of floor primers on all porous substrates (when adhesive used). PLEASE FOLLOW ADHESIVE MANUFACTURERS INSTALLATION INSTRUCTIONS INCLUDING PROPER TROWEL SIZE.

Caution: If you plan to remove old resilient flooring material or any type of old adhesive, please be aware that it may contain asbestos fibers or crystalline silica; therefore, avoid creating dust. Inhalation of such dust is a cancer and respiratory tract hazard and local regulations may require professional removal. Instructions for the removal of old flooring materials and adhesives may be found in the RFCI Recommended Work Practices for Removal of Resilient Floor Coverings. You may contact the Resilient Floor Covering Institute at 706-882-3833 or www.rfci.com.

PATCHING AND LEVELING

Use only cement-based patching and leveling compounds. Check with patching and leveling compound manufacturers for curing times. Check moisture levels before starting installation to ensure moisture levels are within guidelines outlined in the Concrete Slab section.

Note: Priming the substrate or adding latex to levelers will normally make the floors NON-POROUS. Test for porosity and use the non-porous adhesive instructions if necessary (when adhesive is used).

The contractor or owner is responsible for cure time, moisture content testing, and the structural integrity of any leveling or patching compound used.

EMBOSSING LEVELERS

When installing over an existing resilient flooring material, an embossing leveler may be required to prevent the existing material pattern from telegraphing through the new material. Embossing levelers are for sheet goods with textures that could telegraph through the LVF and be visible on the surface.

Note: Existing resilient flooring should be in good condition, non-cushioned, thoroughly bonded to the substrate, and all waxes or finishes should be removed before applying embossing levelers or adhesives.

PRIOR TO INSTALLATION

- Cartons should be stored horizontally at all times.
- Protect carton corners from damage.
- Do not install cabinets or kitchen island on your floating floors.
- Inspect all planks/tiles for visible defects and damage before and during installation. Do not install damaged planks/tiles. Beaulieu will not accept responsibility for claims on flooring installed with visible defects. During installation, inspect the groove area and remove any debris that may prevent proper assembly of planks/tiles.
- BeaulieuLVF is production-run sensitive. Ensure that all planks/tiles you are installing come from the same production run. Beaulieu cannot guarantee that any future replacement or additional installation will match the originally-installed product.
- Ensure that all boxes are of the same product and mix planks/tiles from different boxes for best results.
- Room temperature should be no less than 65°F (18.3°C) for 48 hours before, during and after installation.
- Remove all existing moldings.
- Undercut doorway moldings to the thickness of the flooring.
- BeaulieuLVF is a floating floor and should never be nailed down to the substrate. A full spread glue-

down application may be acceptable. For questions in regard to installing locking LVF using the full spread glue-down method, please contact Technical Services.

- BeaulieuLVF is intended for indoor use only.
- Determine in which direction the planks/tiles will be installed. It is recommended that the flooring be installed running parallel to the longest wall.
- Carefully measure the room to determine the width of the last row of planks/tiles. If the width is less than 2" (50 mm), excluding the tongue, the width of the first row of planks/tiles will have to be cut accordingly.
- A minimum of 1/4" (6.35 mm) expansion space is required around the perimeter of the room and all vertical objects.

INSTALLATION

1. Begin laying planks/tiles from the left side of the starting wall and work to the right side. The tongue of the plank/tile should face the starting wall.
2. Place 1/4" (6.35 mm) spacers between the short and long side of the planks/tiles and the wall. Always position one spacer between the wall and where the planks/tiles join.
3. The end joints of the planks/tiles in the first row are assembled by inserting the tongue side into the groove side of the previous plank/tile at a low angle. Gradually lower the plank/tile down flat until the end joint closes, insuring that the planks/tiles are perfectly aligned. Install remaining full planks/tiles in the first row.
4. The last plank/tile in the first row will need to be cut. Measure the distance between the wall and the surface of the last full plank/tile. Subtract 1/4" (6.35 mm) from this measurement to allow for the spacer. If this measurement is less than 8" (20 cm), the length of the first plank/tile in the row should be cut. The first and last plank/tile in each row should be at least 8" (20 cm) in length. Planks/tiles are cut using a sharp utility knife and a square. Score the surface of the plank/tile with the knife and snap the plank/tile at the score line.
5. The remaining piece cut off from the last plank/tile in the first row may serve as the first plank/tile in the second row provided it is at least 8" (20 cm) long. Always stagger end joints from row to row a minimum of 8" (20 cm) apart.
6. Install the long side of the first plank/tile of the second row. Place a 1/4" (6.35mm) spacer between the wall and the short side of the plank/tile. Insert the tongue side into the groove side of the previous row at a low angle and lower flat to the substrate.
7. Install the second plank/tile of the second row. Position the long side of the plank/tile with the tongue side overlapping the groove of the planks/tiles in the previous row approximately 1/8" (3.2 mm). Then, angle the end joint into the previous plank/tile. Angle the plank/tile up and gently push forward until the plank/tile locks into the previous row. Continue installing planks/tiles in the second row. It is important to make sure that the first two rows are straight and square as they can affect the entire installation.
8. Continue working from left to right, row by row. Be sure to maintain a 1/4" (6.35 mm) space around all walls and vertical objects and maintain a random appearance. Remember to offset end joints a minimum of 8" (20 cm).

FINISHING THE INSTALLATION

- After all planks/tiles have been installed, remove spacers from perimeter of room.
- Install transition moldings. Do not fasten any moldings through the flooring.
- Install quarter-round or baseboard molding. Molding should be of sufficient size to cover the 1/4" (6.35 mm) space and should be fastened to the wall, not to the flooring.

COMMERCIAL INSTALLATION

All commercial installations of locking LVF require approval by a Beaulieu representative.

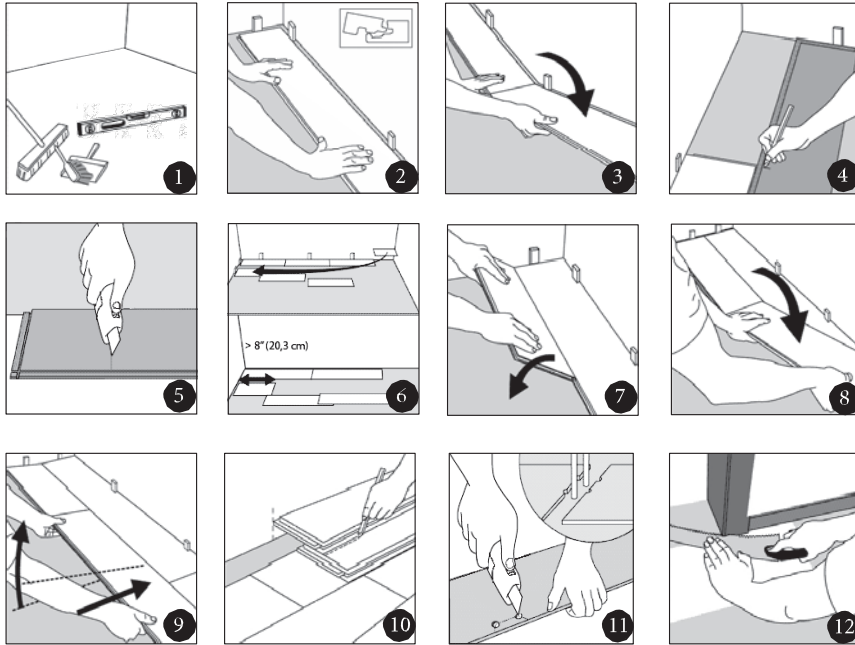
For commercial installations that are subject to rolling loads and high traffic areas, the full spread glue-down method is required.

Contact Technical Services Department at 800-944-2840 or tek.services@beaulieugroup.com for further details.

IMPORTANT

- Use plywood to cover the top of the flooring when moving heavy furniture or appliances into position.
- Use proper floor protectors under the legs of furniture and chairs.
- Heavy furnishing loads placed on the locking luxury vinyl floor can pin a locking product down to the substrate which may prevent the product from expanding and contracting evenly, causing side or end separation, peaking or gapping. Beaulieu recommends that any locking LVF product that has rolling loads or heavy furnishings be installed with adhesive.
- Do not nail down Beaulieu LVF.
- BeaulieuLVF is intended for indoor use only.
- Beaulieu LVF is warranted as a floor covering only.
- Post-installation temperature should be maintained between 65°F - 85°F (18.3°C - 29.4°C). Relative humidity should be maintained between 40% and 70%.
- Protect the installation from direct sunlight exposure. Close blinds or drapes during peak sunlight hours. Floor covering exposed to excessive heat and light is subject to thermal degradation. Use appropriate precautions to minimize potential effects on the floor covering. Flooring that cannot be protected from direct sunlight is required to be installed with adhesive. Failure to install this LVF with Beaulieu approved adhesive when such flooring will be exposed to direct sunlight voids all warranties, express or implied; the end user shall assume full responsibility for any failure of the flooring, and Beaulieu shall be released from any claims, damages, or liabilities whatsoever arising out of or related to the failure to install the flooring with approved adhesive when the flooring is exposed to direct sunlight.

Follow the Beaulieu Care and Maintenance Guidelines to properly care for your flooring. These can be found on our website at beaulieuflooring.com, or you may contact Technical Services at 800-944-2840 or tek.services@beaulieugroup.com.

INSTALLATION ILLUSTRATIONS**Homeowner Obligations**

To maintain the coverage under the terms of these warranties and ensure fast and easy warranty service, the homeowner is responsible for the following:

- Keep five (5) planks/tiles of the LVF product after installation for testing purposes.
- Keep and be able to provide the original sales receipt or documentation illustrating proof of purchase and installation date of the product.
- Make sure the floor is installed according to Beaulieu Installation Instructions.
- Keep a list of products used to clean the flooring.

Please visit our website at beaulieuflooring.com for the most up-to-date version of this document as it may have been revised and updated since this printed version.

Warranty Guide as well as Care and Maintenance instructions can also be found on our website at beaulieuflooring.com, or you may contact Technical Services at 800-944-2840 or tek.services@beaulieugroup.com